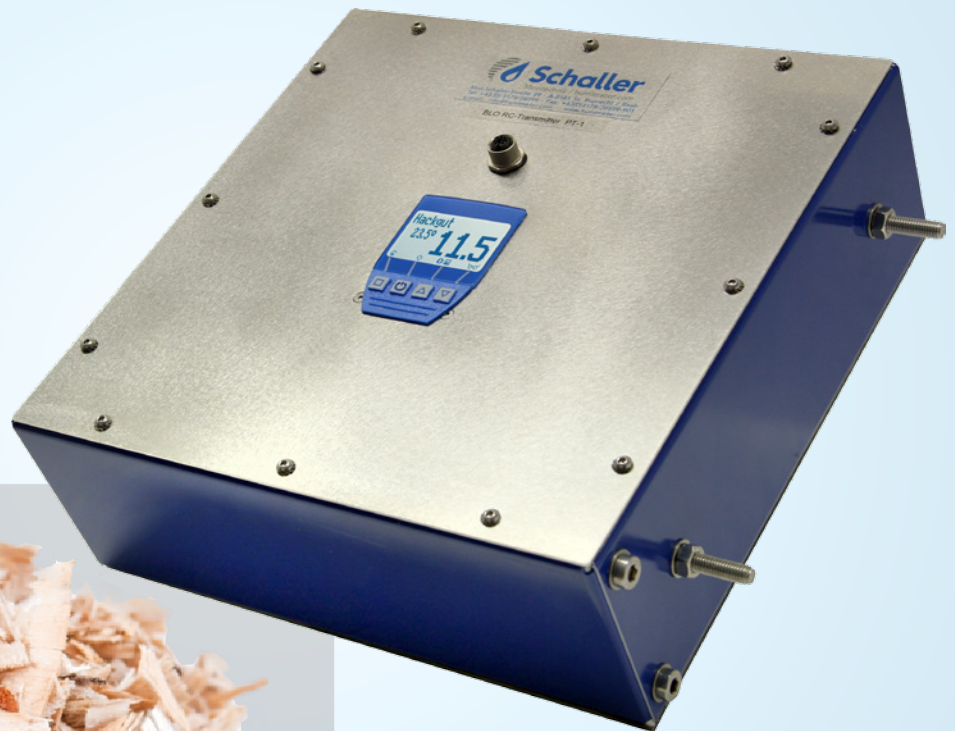




## Bioenergy

## BRC moisture transmitter

Online moisture transmitter for determination of water content of dry wood chips, e.g. suited for wood gasification plants





# Bioenergy

## BRC moisture transmitter

for determination of water content of dry wood chips, for direct installation in a chip bunker or in the discharge system of push floor conveyors

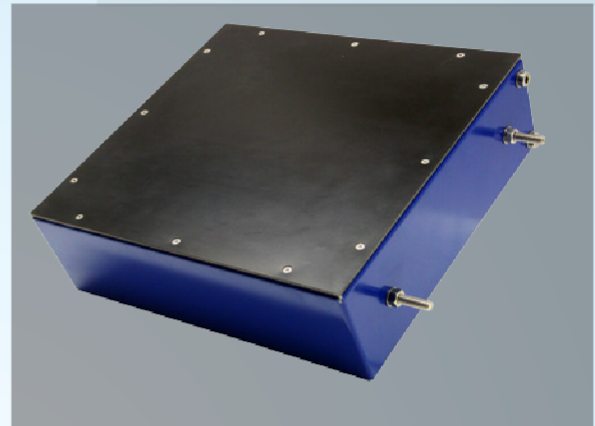


### Online determination of water content:

The BRC moisture transmitter enables the facile on-line determination of water content of dry wood chips. The BRC transmitter can easily be integrated in existing plants and is also suited for measuring coarse material (up to wood chip class P100).

This enables the optimal control of a dryer, boiler or wood gasification plant with respect to the water content. That way the efficiency of your plant can be increased, energy consumption for drying can be reduced, which in general means rising efficiency and the fabrication of a product of higher quality.

The connection to a control system can be realised via the 4-20mA analogue output. As the BRC moisture transmitter is readily calibrated, the installation can be realised with a modicum of effort.

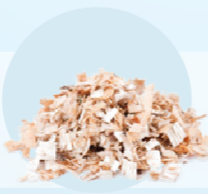
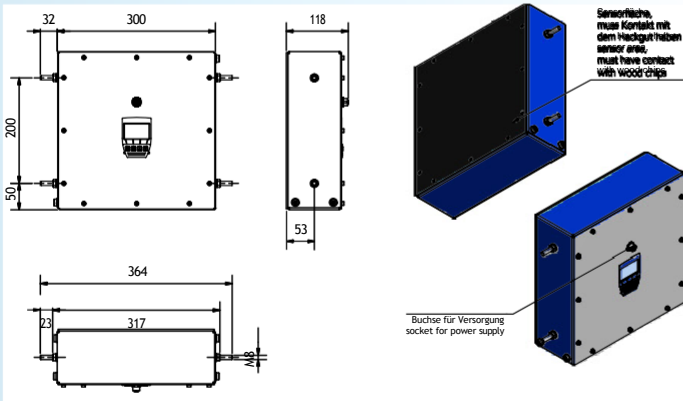


### Features

- Measuring range 2 - 30% water content (represents 2 - 43% wood moisture)
- Resolution 0.1%
- Temperature range for determination of water content: 0 to +50°C/32 to 122°F
- Automatic temperature compensation
- For wood chip classes P16 to P100
- Close contact of material to measuring surface is essential
- Illuminated display
- Protection class: IP52
- Power supply 24VDC (15 to 29VDC)
- Analogue outputs 4-20mA for water content

and optionally for temperature

- Dimensions: 364x300x118mm
- Weight: 3.7kg



Climate / Environment

Foods

Bioenergy

Material

Buildings

Paper / Board

**GRUBATEC AG**  
 Gewerbehau Ergolz, Wölferstrasse 5 4414 Füllinsdorf  
 Telefon: +41 (0)55 617 00 80  
[www.grubatec.ch](http://www.grubatec.ch)  
[sales@grubatec.ch](mailto:sales@grubatec.ch)

Any technical changes reserved. Pictures do not show possible changes that have been made on different models.

A wide range of other instruments and external sensors can be found at [www.grubatec.ch](http://www.grubatec.ch)

