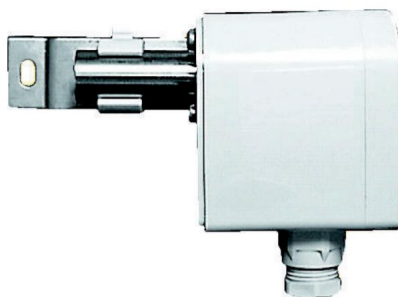




Temperature transmitter MTA 90P

Temperature measurement in humid rooms or outdoors

- IP65 plastic housing with snap-on wall mount
- Pt100 sensor according to DIN 43700
- double-walled sensor tube as rain and radiation protection
- Output 4...20 mA in two-wire technology
- 4 calibrated measuring ranges, selectable via DIP switches:
 - 30...+70 °C -30...+40 °C
 - 20...+60 °C 0...+50 °C



Description and operation

Safety instructions



Caution! Read these instructions carefully before connecting and operating the device. The device must only be connected and operated by qualified personnel.

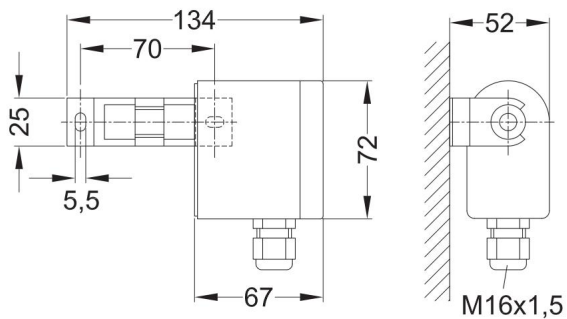
Application, assembly

The MTA 90 temperature transmitter is used for measuring temperatures in damp rooms or outdoors. For this purpose, the included wall bracket is mounted horizontally on a wall, and the MTA 90 transmitter is then snapped onto this bracket. The transmitter's sensor tube is double-walled, thus providing good protection against rain and radiation.

The electronics are designed using two-wire technology with an output signal of 4...20 mA. A supply voltage of 13...30 Vdc is required.

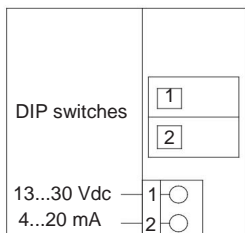
After installation, one of four measuring ranges can be selected via a 2-pole DIP switch, which is then assigned to the signal range of 4...20 mA.

Construction dimensions



electrical connection

Two-wire technology
Output 4...20 mA



DIP switches

1 off 2 off 1
on 2 off 1 off
2 on 1 on 2
on

Measuring range

-30...+70 °C
-30...+40 °C
-20...+60 °C
0...+50 °C

Technical data

Housing:	Plastic, ABS, light grey Protection class IP65 according to EN 60529 Overall dimensions 134 x 72 x 52 mm (W x H x D)
Assembly:	Wall mounting using wall brackets
Sensor tube:	double-walled stainless steel
Exit:	4...20 mA in two-wire technology
Supply voltage:	13...30 Vdc, two-wire technology
electrical connection:	Screw terminals
Cable entry:	M16x1.5
Weight:	approx. 200 g
Sensors:	Pt100 according to DIN 43760, Class A
Measuring ranges:	Adjustable via DIP switches -30...+70 °C, -30...+40 °C, -20...+60 °C, 0...50 °C
Measurement error:	< 0.25 % ± 0.3 °C
EMC:	Tested according to EN 50081-1, 50082-2, CE marking