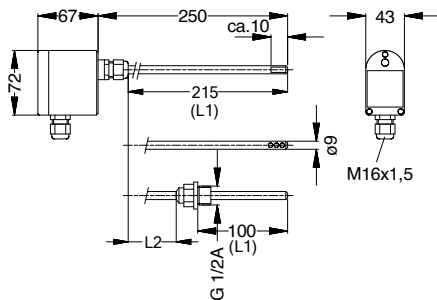




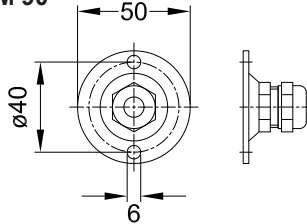
- ❑ Temperature transmitter with Pt100 according DIN EN 60751
- ❑ Analog outputs 0...10 V or 4...20 mA
- ❑ Plastic case with protection class IP 65
- ❑ Sensor tube from 9 mm stainless steel 1.4571

The MINI90 series is used for temperature measurement in pipes or ducts. Three versions are available: smooth probe tube for use in protective sleeves, perforated pipe probe tip for measurement in air ducts and pipes with G1/2A-screwing sensor for measurements in liquids. In the G1/2A-version the measuring insert can be replaced with the electronic, without demounting the tube. The sensor tube is made of stainless steel 1.4571, the head of ABS plastic.

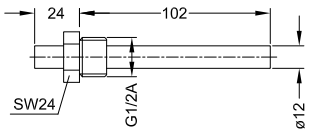
**Dimensions (mm)**



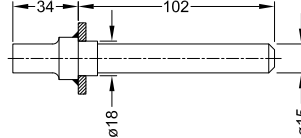
**Mounting flange  
MF-M 90**



**threaded protection sleeve  
SHS-M90**



**weld-in protection sleeve  
SHE-M 90**



**TECHNICAL SPECIFICATIONS:**

Operating mode: Measuring mode  
 Measuring medium: Temperature  
 Measuring principle: Pt100 class A according DIN EN 60751  
 Measuring unit: °C  
 Measuring range: 0...400 °C

**PHYSICALLY:**

Protective tube: 9 mm stainless steel, w. 1.4571  
 Connection head: Plastic ABS, light gray  
 Sleeve: Screw-in protective sleeve SHS-M90, brass, brazed;  
 Welding protection sleeve SHE-M90, St37 PN40  
 Protection class: IP 65 according to EN 60529  
 Electrical connection: Two-wire, three-wire technology  
 Installation: Mounting flange  
 Weight: Approx. 250 g

**ELECTRONIC:**

Output: 13 ... 30 Vdc, any polarity or 24 Vdc or 24 Vac, ± 25%  
 Supply voltage: 0...10 V or 4...20 mA

**CONFORMITY:**

EMC: EN 61000-6-2, EN 61000-6-3, CE-mark  
 RoHS: according RoHS-directive 2011/65/EU

Time constants at different conditions:

	time constant
<b>Medium: Water</b>	sec.
no flow	37
flow 2 m/s	33
with protection sleeve, brass	73
with protection sleeve, brass oil-filled	50
with protection sleeve, steel	85
with protection sleeve, steel oil-filled	45
<b>Medium: Air</b>	
no flow	416
flow 10 m/s	75

		Item no.
<b>Duct temperature transmitter MINI90</b>	plan tube	
2-wire technology, output: 4...20 mA	<b>Measurement range: Customer-specific presetting required!</b>	<b>7120</b>
3-wire technology, output: 0...10 V	<b>Measurement range: Customer-specific presetting required!</b>	<b>7125</b>
<b>Duct temperature transmitter MINI90</b>	tube end perforated	
2-wire technology, output: 4...20 mA	<b>Measurement range: Customer-specific presetting required!</b>	<b>7121</b>
3-wire technology, output: 0...10 V	<b>Measurement range: Customer-specific presetting required!</b>	<b>7126</b>
<b>Duct temperature transmitter MINI90</b>	welded screwing G1/2A, mounting length 100 mm	
2-wire technology, output: 4...20 mA	<b>Measurement range: Customer-specific presetting required!</b>	<b>7122</b>
3-wire technology, output: 0...10 V	<b>Measurement range: Customer-specific presetting required!</b>	<b>7127</b>

**ACCESSORIES**

<b>Mounting flange MF-M 90 for air ducts</b>		<b>71201</b>
<b>Threaded protection sleeve SHS-M 90, brass, brass, brazed</b>		<b>71202</b>
<b>Weld-in protection sleeve SHE-M 90 St37 PN40</b>		<b>71203</b>
<b>Special length L1 / L2</b>	<b>Customer-specific presetting required!</b>	<b>71204</b>