

# MULTI RANGE TRANSMITTER MINI90-P

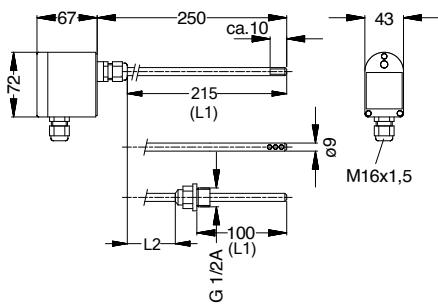


- ❑ Resistant element Pt100 class A DIN EN 60751
- ❑ 8 calibrated measuring ranges selectable via DIP-switches
- ❑ Sensor tube 9 mm stainless steel 1.4571
- ❑ Analog output 4...20 mA
- ❑ Plastic housing with protection class IP 65

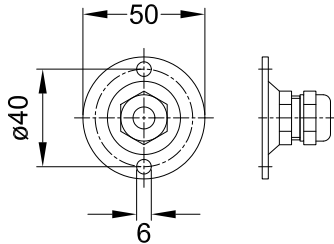
The MINI90-P series is designed for temperature measurement in pipes or channels. Three versions are available:

- **Straight sensor tube** for use in protective sleeves
- **Perforated sensor tube tip** for measurements in air ducts
- **Sensor tube with G1 / 2A screw** for measurements in liquids

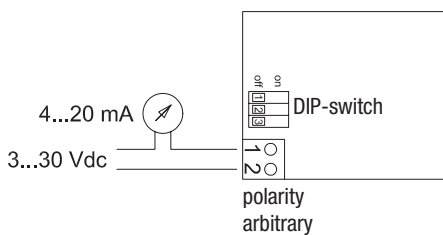
In the G1 / 2A version of the measuring insert, together with electronics can be replaced without that the sensor tube must be screwed out of the pipeline.



Mounting flange MF-M90



### Connections - 2-wire technology



Measurement tolerance: **ACCURACY / ERROR LIMIT:**  
< 0,25 % ± 0,15 °C  
Long-term stability: Max. R0-Drift 0,05 % / year

**TECHNICAL SPECIFICATIONS:**  
Operating mode: Measuring mode  
Measuring medium: Temperature  
Measuring principle: Pt100 class A according DIN EN 60751  
Measuring unit: °C  
Max. temperature: Max. 400 °C  
Measuring ranges: 8 calibrated measuring ranges can be selected via DIP switches  
Ambient temperature: -10...+70 °C

**PHYSICALLY:**  
Protective tube: 9 mm stainless steel, w. 1.4571  
Connection head: Plastic ABS, light gray  
Sleeve: Screw-in protective sleeve SHS-M90, brass, brazed; Welding protection sleeve SHE-M90, St37 PN40  
Protection class: IP 65 according to EN 60529  
Electrical connection: Two-wire, three-wire technology  
Installation: Mounting flange  
Weight: Approx. 250 g

**ELECTRONIC:**  
Output: 13 ... 30 Vdc, any polarity or 24 Vdc or 24 Vac, ± 25%  
Supply voltage: 0...10 V or 4...20 mA

**CONFORMITY:**  
EMC: EN 61000-6-2, EN 61000-6-3, CE-mark  
RoHS: according RoHS-directive 2011/65/EU

### Measurement range:

Measurement group 1 Solution 0.2 °C	Measurement group 2 Solution 0.4 °C	DIP1	DIP2	DIP3
1. -50...0...+150 °C	1. 0...400 °C	off	off	off
2. -30...0...+ 40 °C	2. 0...350 °C	on	off	off
3. -20...0...+ 60 °C	3. 0...300 °C	off	on	off
4. -20...0...+100 °C	4. 0...250 °C	on	on	off
5. 0..... 50 °C	5. 0...200 °C	off	off	on
6. 0.....100 °C	6. 50...150 °C	on	off	on
7. 0.....150 °C	7. 100...300 °C	off	on	on
8. 20.....120 °C	8. 100...400 °C	on	on	on

		Item no.
<b>Multiple range transmitter MINI 90-P</b>	sensor tube smooth, 8 selectable range	
2-wire technology, output: 4...20 mA,	<b>Measurement range: Customer-specific presetting required!</b>	<b>7123</b>
<b>Multiple range transmitter MINI 90-P</b>	sensor tube perforated, 8 selectable range	
2-wire technology, output: 4...20 mA,	<b>Measurement range: Customer-specific presetting required!</b>	<b>7124</b>
<b>Multiple range transmitter MINI 90-P</b>	sensor tube with G1/2A, 8 selectable range	
2-wire technology, output: 4...20 mA,	<b>Measurement range: Customer-specific presetting required!</b>	<b>7129</b>
ACCESSORIES		
<b>Mounting flange MF-M90 for air ducts</b>		<b>71201</b>
<b>Screw-in sleeve SHS-M90, brass, brazed</b>		<b>71202</b>
<b>Protective sleeve SHE-M90, St37 PN40</b>		<b>71203</b>
<b>Special length L1 / L2</b>	<b>Customer-specific presetting required!</b>	<b>71204</b>