



- ❑ Resistance element Pt100 class A DIN EN 60751
- ❑ Connection head alloy Type B with screw connection G1/2A
- ❑ Sensor tube 15 mm stainless steel 1.4571
- ❑ Various head transmitter (4...20 mA, HART, Profibus) available
- ❑ WBV1R / WBV2R with PTB-approval

Measurement tolerance: < 0,25 % ± 0,15 °C
 Long-term stability: Max. R0-Drift 0,05 % / year

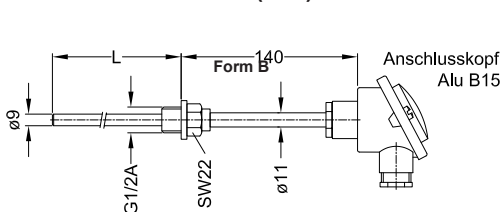
TECHNICAL SPECIFICATIONS:
 Operating mode: Measuring mode
 Measuring medium: Temperature
 Measuring principle: Pt100 class A according DIN EN 60751
 Measuring unit: °C
 Measuring range: -70 °C - 400 °C

PHYSICALLY:
 Protective tube: X10CrNiMoTi 1810, 9 mm ø, material-no. 1.4571
 Connection head: Light metal head type B
 Montage: G1 / 2A screw connection

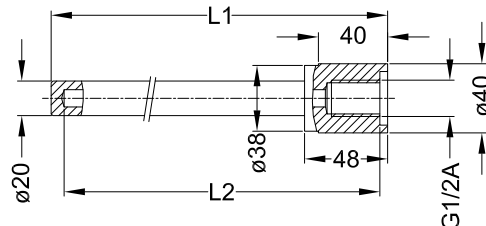
CONFORMITY:
 EMC: EN 61000-6-2, EN 61000-6-3, CE-mark
 RoHS: according RoHS-directive 2011/65/EU

		Item no.
Threaded thermoresistance element WBV with G1/2A in screw, material 1.4571, V4A, terminal head light alloy typ B, temperature max. 400 °C		
WBV05	immersion depth 50 mm	6235
WBV10	immersion depth 100 mm	6236
WBV15	immersion depth 150 mm	6237
WBV20	immersion depth 200 mm	6238
WBV25	immersion depth 250 mm	6239
WBV45	immersion depth 450 mm	6240
SURCHARGE		
Optional - Measuring element Pt1000		67110
Optional - Two measuring elements Pt1000, as far as technical possible		67111
High cap		67112
Transmitter MU-WBV output 4...20 mA		62304
Transmitter MU-WBV-H with HART protocol		62305
Transmitter MU-WBV-P profibus PA		62306

Dimensions (mm)



Weld-in sleeve



		Item no.
Threaded thermoresistance element WBV-R with screw G1/2A, measuring element Pt100, DIN 60751, class A, grouped and numbered in pairs, fast setting, max. temperature 250 °C, PTB-licence up to 160 °C, PTB-certificate no. 22.30, 80.06, max. measuring current 5 mA, particular for differential temperature measurements e.g. on calorimetry		
WBV1R	- nominal length 160 mm	6248
WBV2R	- nominal length 250 mm	6249
Weld-in sleeve material: Steel St37.2, D = 31 mm, d = G1/2A		
B150	- nominal length 150 mm, L1 = 164 mm, L2 = 156 mm	62004
B160	- nominal length 160 mm, L1 = 174 mm, L2 = 166 mm	62001
B250	- nominal length 250 mm, L1 = 264 mm, L2 = 256 mm	62002
Weld-in sleeve made by stainless steel on request		

FLUE GAS TEMPERATURE SENSOR up to 400 °C



- ❑ Measuring element Pt100 class A according DIN 43760
- ❑ Sensor tube stainless steel, \varnothing 15 mm
- ❑ Connection head alloy form B

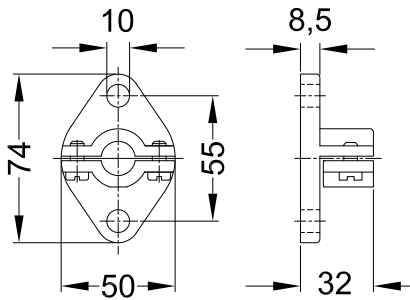
Thermoresistance elements for temperature measuring max. 400 °C. The measuring element is a precision resistance element Pt100 class A, according to DIN EN 60751.

Measurement tolerance: < 0,25 % \pm 0,15 °C
 Long-term stability: Max. R0-Drift 0,05 % / year

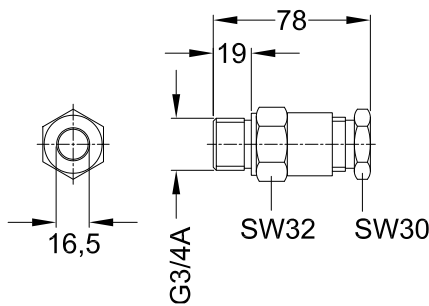
Operating mode: Measuring mode
 Measuring medium: Temperature
 Measuring principle: Pt100 class A according DIN EN 60751
 Measuring unit: °C
 Measuring range: -70 °C - 400 °C

Protective tube: X10CrNiMoTi 1810, 15 mm \varnothing , material-no. 1.4571
 Connection head: Light metal head type B

EMC: EN 61000-6-2, EN 61000-6-3, CE-mark
 RoHS: according RoHS-directive 2011/65/EU

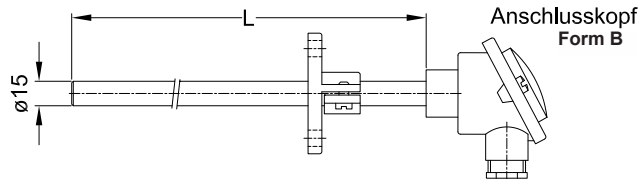


Movable flange

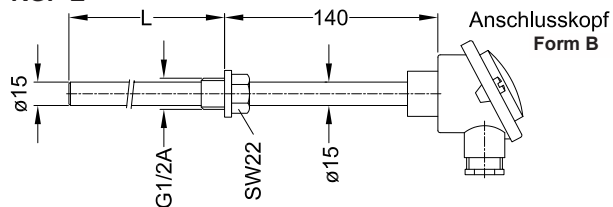


Sliding threaded sleeve

RGF



RGF-E



Item no.

Flue gas temperature sensor RGF

Straight tube with slidable flange, terminal head light alloy typ B, temperature max 400 °C

RGF1 - nominal length 250 mm	6740
RGF2 - nominal length 500 mm	6741
RGF3 - nominal length 750 mm as screw-in temperature-sensor with G1/2A in screw	6742
RGF1E - nominal length 250 mm	6745
RGF2E - nominal length 500 mm	6746
RGF3E - nominal length 750 mm	6747

SURCHARGE

Threaded sleeve, slidable, M15, R 3/4"	62011
Optional - Measuring element Pt1000	67110
Optional - Two measuring elements Pt1000, as far as technical possible	67111