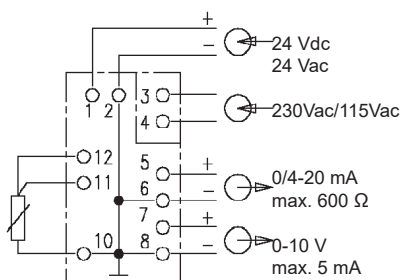




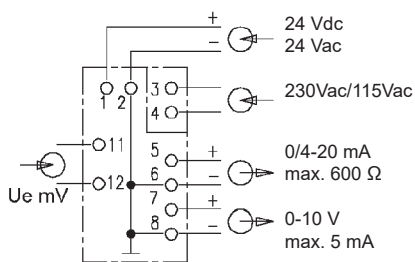
- ❑ Transmitter for connection to a Pt100 element , mV transmitter or potentiometer
- ❑ Measurement and span from the front by trimmer
- ❑ Outputs 0...10 V and 0/4...20 mA
- ❑ Operating temperature 0...50 ° C
- ❑ Supply voltage 230/115 Vac, 24 Vac or 24 Vdc
- ❑ Plastic housing for mounting on 35 mm DIN rail according to EN 50022 (DIN-rail)

For connection to Pt100 - or mV measuring primary elements - or resistance potentiometer. Output signals are both a voltage signal 0...10 V and a current signal 0/4...20 mA. Both output signals are related to their common negative pole.

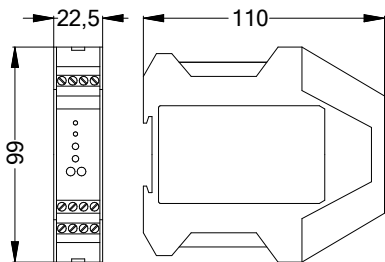
**Connections WT225**



**Connections VT225**



**Dimensions (mm) serie 225**



**ACCURACY / ERROR LIMIT:**

Tolerance: ± 0,2 %  
Temperature drift: ± 0,2 % / 10 K

**TECHNICAL SPECIFICATIONS:**

Operating Mode: Measurement mode  
Entrance: Pt100 in three-wire circuit, mV or resistance  
Measuring span: Smallest 20 ° C, largest 400 ° C  
With VT 225 smallest 0 ... 10 mV  
Start of measurement: -50, -30, 0, +30, +50, +100 ° C  
Curve: Temperature linear, voltage linear  
Settings: Measuring start and span can be adjusted from the front via trimmer

**PHYSICAL:**

Display: Operating indicator green, overdrive or sensor break red  
Casing: Polyamide gray, for mounting on a 35 mm standard profile rail according to EN 50022  
Dimensions: 22.5 x 99 x 110 mm (WxHxD)  
Protection class: IP 20 according to EN 60529  
Connections: Screw terminals up to 2.5 mm<sup>2</sup>  
Ambient temperature: -10 to 50 ° C  
Rel. Moisture: 0 ... 85%, no condensation  
Weight: Approx. 160 g

**ELECTRONIC:**

Power supply: 230 Vac / 115 Vac via input transformer or 24 Vac or 24 Vdc  
Power consumption: Approx. 1.5 VA  
Test sockets: 2 mm ø for measuring the output current, internal resistance of the current meter max. 10 Ω  
Voltage output: 0 ... 10 V, short circuit proof, max. 5 mA  
Current output: 0/4 ... 20 mA, max. Load 600 Ω  
Max. Output current: Approx. 25 mA for overdrive or sensor break, indicated by red LED

**CONFORMITY:**

EMC: EN 61000-6-2, EN 61000-6-3, CE-mark  
RoHS: according RoHS-directive 2011/65/EU

Item no.

**Transmitter WT225**

**5117**

Input: Thermoresistance element Pt100 in three-wire circuit  
**Measurement range: Customer-specific presetting required!**  
Output: 0...10 V and 0/4...20 mA, temperature linear  
Supply voltage: 230/115 Vac, 24 Vac or 24 Vdc

**Transmitter VT225**

**5118**

Input: Voltage from 10 mV, **Measurement range: Customer-specific presetting required!**  
Output: 0...10 V and 0/4...20 mA, supply voltage: 230/115 Vac, 24 Vac or 24 Vdc

**Transmitter WF225**

**5119**

Input: resistance, **Measurement range: Customer-specific presetting required!**  
Output: 0...10 V and 0/4...20 mA, supply voltage: 230/115 Vac, 24 Vac or 24 Vdc